

AUBURN EXPRESS

December, 2022

ACDC Executive Committee Members

Rhonda Seymour (Chair), Liz Pridham (Secretary), Joan Concy (Treasurer),
Graham Richards, Hellen Riley, Russ Parkins (Public Officer), Robert Tilley.

Contact: Rhonda Seymour Tel: 8849 2389, E-mail: rhoje100@gmail.com, PO Box 202, Auburn SA 5451
www.auburn.sa.au



ACDC – December Report

Bows have been tied, trees are up, decorations hung, lights charged and the town is ready. Thank you to the busy elves whose efforts are appreciated, in making our town colourful for the festive season.

Christmas Eve in the Park: Tis less than a week till Christmas and the weather is not quite right! Get out your picnic rugs and overcoats and get ready for Christmas Eve in the Park. (make sure you dress for mosquitos...**reports say they are biting**). There will be BBQ, soft drinks, music, Raffle, Santa and a fun time to be had by all. The food and raffle tickets will require your small change. Come one, come all, to Santa's Cave from 4.30-6.30pm, at the Auburn Institute in the supper room. Look for the Santa signs. The BBQ will be served in the park from 6.30-8pm. Bring your chairs, relax and enjoy our festive community event. **See page 8.**

New Garbage Bins: Some people are using their new black coloured bin for recycling. Contact Council if you have not received yours. The new FOGO (green) bin collection starts in the New Year, and all collections will be fortnightly. Collection days for Auburn will be General refuse Wednesday, Recycling Friday and the Green waste Tuesday. Council is planning to send out a new collection calendar prior to commencement.



New Projection Equipmnt: The Auburn Institute and **U2Kids** sub-committees are jointly purchasing a data projector and screen, to be installed very soon in the institute. Congratulations to these committees for their collaboration and working to improve the facilities available at the Institute.

New Fire Ratings: The November edition of the Auburn Express contained information on new Fire Ratings. This edition has a poster on Heatwave management and Grain Harvesting Code of Practice. You may choose to print these and keep as a useful resource. **See Pages 9 and 10.**

The **U2Kids** committee organised an Opening Celebration event in Centenary Park on Sunday November 27th. The Council and local volunteers were thanked by Lisa Ziersch (**U2Kids** Chairperson) for their efforts to bring the ideas gathered from our local children, to fruition. Food and activities were enjoyed by all who attended. The Circobats Troupe from Adelaide entertained the audience and allowed local children to try their skills at juggling, and 'hanging' from the tripod. A donation from the local U3A Coffee and Chat group assisted with the cost of Circobats. Trish Schmerl and Caroline Lally guided children through the rock painting activity. Mayor Aughey attended and cut the official "crepe paper ribbon". Thanks to all who helped make this day for our local families.

Auburn Australia Day Breakfast: Its on again! Mark your Diary for January 26th, for the Auburn Australia Day Breakfast. There will be bacon, sausage, eggs, tomato, muffins fresh fruit and music, so come along for an 8.30 am start, to our great park and enjoy our great community get-together. Posters will be placed around Auburn during January.

The ACDC Community Award Nominations: Nominations close on January 9th 2023. Please see the form on **page 7** for your consideration and return to lizpridham1@gmail.com by 9th January.

Auburn students...thank you! What a lovely surprise for Auburn businesses to receive a visit from the Auburn Primary School students, delivering personally made and hand written Christmas cards. Shops that were open received their card in person, and the shops that were closed, found their card tucked in their front door decorations. Thank you to the students and staff for spreading the cheer across our community. What a lovely gesture!

I wish all of our community members and families, a great Christmas, spending time with loved ones and making special memories.

A late message: the **U2Kids** committee were successful in receiving a Council Community Asset Grant for a Music Wall and metal Pod Frame for Centenary Park.

Rhonda Seymour, Chair.

Exhibitions / Workshops

LINHAY GALLERY AUBURN

Thank you for your wonderful support in 2022...it is very much appreciated...

Wishing all of you a very safe and Merry Christmas and also only the best for 2023.

Hellen - 0457 824 222

BEN PORTER

Picture framing for you.

Full range of Anton's frames and Peterboro matboards.

Professional results at a reasonable price.

11 Raglan Street Auburn.

Phone **0427 777 246**

Email: benfromyorkshire@gmail.com

Body & Soul Natural Therapies

It's all about you...



Brigitte Baker - Ph: 0421 571 833

Remedial/Relaxation Massage - Traditional Chinese Cupping

bodyandsoulnaturaltherapies.com



FREE WEBSTER PACKING

Monday to Friday 10:00 AM to 4:30 PM

24 Main North Road,
Auburn SA 5451

Phone: 08 8849 2159 Fax: 08 8180 1714

**Rehab &
Repair Physio**



**Melissa Harris
Physiotherapist APAM**

B. Physio. Grad Dip OH&SM

42 Main North Rd

Auburn, SA

PO Box 315, Auburn, SA 5451

Appointments via phone;

T: 0474 706 068

E: melissaharris@mrphysio.com.au

W: rehabandrepairphysio.com

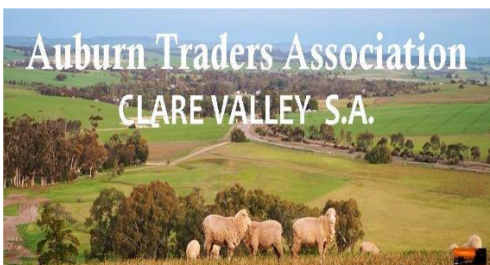


Always supporting Auburn



Your local Justices of the Peace...

Richard BECKER 8849 2111
Brigitte BAKER 0421 571 833
Tony PICK 0448 313 303
Roger VATER 0447 880 000



**Supporting Small Businesses,
Always Welcoming New Members
Contact us: 0421 571 833**

Auburn's History Column:

Continuing on from October "The Cyclopedia of South Australia (illustrated)" Vol.11, an historical and commercial review, printed in 1909.

Public travel to Auburn and onto Clare was by coach from Saddleworth railway station.



Hill and Co's Coach arriving at Auburn 1880, originally a four-in-hand coach running between Clare and Saddleworth, changing horses at Auburn. Jonny Edwards, the driver in this photo did not live in Auburn. (The view is looking south – the former National Bank residence can be seen in the trees – further along the Corn Store is hidden behind trees).

The coach went north from Saddleworth to Clare. Harry Maddern of Auburn often drove for them. They often ran two coaches with horses changed at The Rising Sun Hotel in Auburn and changed again at Clare. Bill and Steve Waters also had a coach run from Saddleworth to Clare, changing horses at Leasingham. (The Kapunda Herald reported on 11th August 1925 that a framed enlargement of this photo was presented to the Institute by O.C.H. Limbert). Photo Auburn National Trust)

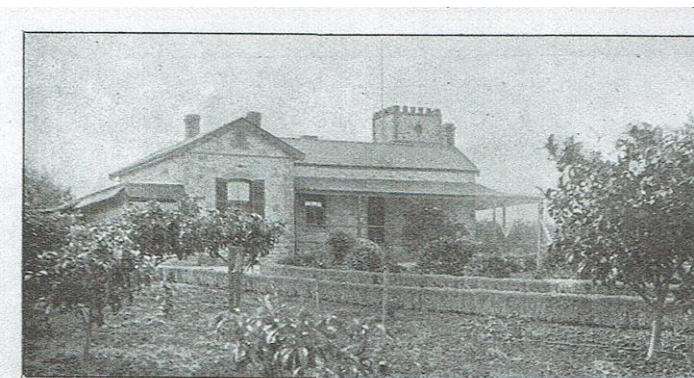
At the time of the "Cyclopedia" the coach journey passed "Koonowla" owned by Mr. John Burne Tothill, a vigneron and



agriculturist, with his address being Saddleworth although much closer to Auburn.

The railway was used by this district for the export of produce (*until 1916 when rail opened as far as Auburn from Riverton*). Born in England in 1856, he was in the P. & O. Company from 1871 to 1887, being an executive officer for the Company, subsequently appointed dockmaster for the same company at Bombay, followed by being a marine surveyor.

In 1892 Mr Tothill came to South Australia and purchased, in company with another, about 850 acres of land in the Auburn district. During the first year of his occupation, he planted 70 acres of this property with vines, and in each succeeding season he increased the area under cultivation, his vineyard and orchards extending over 160 acres. In 1896 he built the "Koonowla" cellars and commenced winemaking, the type produced being a heavy Burgundy, suitable for export to England. He combined agricultural pursuits with the winemaking industry, and, generally experienced a successful career. In 1904 he sold the estate at a good profit and travelled to England but found the South Australian climate better suited his constitution so returned. Mr Henry Dutton, of Anlaby near Kapunda, was now the owner of "Koonowla" and upon request, Mr Tothill resumed the management of the property.



"Koonowla" homestead in the early 1900's.

Another Auburn farmer and grazier, Henry Norman Thomas, purchased "Highlands", 600 acres on the north side of "Koonowla". He was



born at Sandy Creek in 1878 and assisted in the family farm there until 1901. He concentrated on breeding a stud of Shropshire sheep and received many prizes at country shows. He was a member of the local show committee.

John Plew of "Wadnama" Undalya received his education at the Stanley Grammar school at Watervale. His property comprised of 1200 acres of pastoral country where he concentrated on breeding of stock, raising cattle and horses, and sheep, mainly Merino type. Plew's large property started with one section in 1848, and a later generation, after 1862, added 5 more sections.



"Wadnama" homestead, near Undalya, showing the old stone wall - later the Barber family home,

The "Cyclopedioa" publication shows the photos of Messrs Tothill, Thomas and Plew.

It is interesting, how could these early settlers afford to purchase such sizeable parcels of land?

**Kay Lambert
National Trust, Auburn Branch.**





19 Main North Road, Auburn – Clare Valley
Phone: 8849 2015

Thought for the month



AUBURN OLIVE OIL



**Wishes the community
a happy festive season**



**Contact Jason for all your computer needs
on 0432 724 305**

Committed to providing
exceptional service,
solutions and value

- Desktop/Laptop Builds
- Repairs & Upgrades
- Networking
- Cloud Solutions
- Data Recovery
- Servers
- Laptop Sales
- Virus Removal
- Free Loan Computer
- No Call Out/Travel Fees



Contact
M 0432 724 305
E enquiries@jdcomputerz.com.au



Matthew Stanbridge

Contact: 0451 727 089

Email: ask@mcgearthworks.com.au
www.mcgearthworks.com.au

.....

**Items for the next Express due
Tuesday 7th February, 2023**
Editor: Kim Bleeker Tel: 8849 2397 or
E-mail: info@hillsviewestate.com.au



Auburn Primary School
Fairness • Respect • Excellence • Safety • Happiness

**Kickstart For Kids
Morning club &
Afternoon Kids' club**

Available Monday - Friday
bookings essential
Ph - 88492112
Fees apply

Activities & Learning is a Family Setting
10 Vincent Street, 3102 Box 275 Auburn, SA 5031
Tel: 0884921112 Fax: 0884921113 Email: aapt@net.au
Auburn Primary School, www.auburnps.sa.edu.au



SOCIAL TABLE TENNIS @ the AUBURN INSTITUTE

Mondays

5pm – 6.30pm

New players welcome

Gold Coin donation



New Tables have ARRIVED!



U2KIDS are seeking new members!!

Are you aged 6-20yrs &/or an Auburn resident?

Are you interested in:

- Helping youth to grow in Auburn?
- Organising youth events?
- Connecting youth to older citizens?
- Networking and meeting new people?
- Giving your opinion to make Auburn a great place for young people to thrive?

Can you commit to 1 meeting per month?
We'd love to hear from you!

**Please get in touch to chat about the
U2KIDS Committee.**

**Contact Lisa 0437 839 043 or
lisaromes@aapt.net.au**



Wishing you all a very

**HAPPY AND SAFE
CHRISTMAS**

Every happiness for
2023.

See you in the NEW YEAR 😊



PLEASE RETURN THIS IMPORTANT NOMINATION FORM – THANK YOU



Rhonda Seymour Chairperson
Liz Pridham Secretary
Joan Concy Treasurer

P.O. Box 202, AUBURN SA 5451
ABN 74 390 312 163

ACDC Community Award 2022 Nomination Form

Name of Person you are Nominating: _____

Their Address: _____

Their phone: _____

Reason for nomination – how has this person contributed to our community?

(You may consider length of time involved, organisations involved in, contributions and achievements)

(Additional material may be attached if necessary)

Nominator (your details)

Name: _____

Address: _____

Telephone: _____

Signature: _____ **Date:** _____

Please return to the ACDC Secretary, PO Box 202, Auburn SA 5451
Or email to lizpridham1@gmail.com by January 9th 2023.



Christmas Eve in Auburn **Centenary Park**

Santa's Cave

4.30pm to 6.30pm
Auburn Institute.



BBQ ----

6.30pm to
8.00pm

Primary school children free.



The usual Raffle will be held.

**Bring along your chairs,
picnic rug, and drinks.**

*Event co-ordinated by
ACDC and Auburn Business &
Tourism Association.*



Grain Harvesting Code of Practice

A Basis for District Harvesting Code of Practice

Fire Behaviour Index (FBI)

Fire Behaviour Relationships

Fire Behaviour Index	Rate of Spread (km/h)	Difficulty of Suppression	Maximum Area at Various Times from Start (hectares)				Average Final Size of Fire (hectares)
			½ hr	1hr	2hr	4hr	
0-5	0.3	No Rating Head-fire readily suppressed with offensive, direct attack techniques.	0.1	0.2	0.3	0.5	3
6-11	1.3	No Rating Offensive, direct attack techniques on head-fire or flanks largely successful in fire control.	10	40	160	650	16
12-23	0.6-5	Moderate Combinations of direct, indirect, or parallel attack may be necessary for fire control.	160	650	2600	10500	65
24-49	2.5-10	High Offensive strategies likely to be challenged during the peak of the day with focus largely centered on the rear and flanks. Suppression increasingly focused on defensive strategies.	5550	2300	9300	37000	450
50-99	5-16	Extreme Offensive strategies for direct, indirect, or parallel attack on the rear and flanks. Suppression will be largely based on defensive strategies.	1600	6300	25000	100000	2400
100+	8-16	Catastrophic Suppression will be largely based on defensive strategies, ensuring firefighter and community preparedness and safety. Offensive strategies could position crews in danger, however safe opportunities may exist for direct, indirect, or parallel attack on the rear and flanks.	1600	6300	25000	100000	32000

Grain Harvesting Code of Practice

Scope

This code of practice applies to all grain harvesting and grain handling operations that occur “in the paddock”, including operation of grain harvesters, operation of vehicles involved in transporting grain, grain dryers and grain augers.

The Grain Harvesting Code of Practice applies to harvesting of any flammable crop.

Legislative Requirements

1. Compliance with Regulation 35 under the Fire and Emergency Services Act 2005 regarding the use of stationary engines to auger a crop. That is, an operator must clear the space immediately around and above the engine to a distance of at least four (4) meters, or a person who is able to control the engine is present at all times while the engine is in use. The operator must also carry a shovel or rake, and a portable water spray in good working order, and ensure that engine or exhaust system complies with Fire and Emergency Services Regulation 29(2).

2. Compliance with Regulation 36 under the Fire and Emergency Services Act 2005 regarding the use of internal combustion engines to harvest or move a flammable crop. That is, an operator must carry a shovel or rake, and a portable water spray; and ensure that engine or exhaust system complies with Fire and Emergency Services Regulation 29(2).

For the purposes of this Division, an engine or vehicle exhaust system complies with this Division if:

- a. all engine exhaust emitted by the engine or vehicle exits through the system; and
 - b. the system, or a device or devices forming part of the system, is designed to prevent the escape of burning material from the system; and
 - c. the system, or a device or devices forming part of the system, is designed to prevent heated parts of the system from coming into contact with flammable material; and
 - d. the system is in good working order.
3. For the purposes of subregulation (2)(a) under Fire and Emergency Services Regulation 29(3), engine exhaust emitted by a turbocharged engine, or a vehicle fitted with a turbocharged engine, by means of a device of a kind commonly known as a waste gate will be taken to exit through the exhaust system of the engine or vehicle.

Required Practices

1. Suspend grain harvesting operations when the local actual FBI exceeds 40.
Cease of harvest should be determined by:
 - a local committee using weather measurement and calculation apps, in consultation with farmers
 - measurements and calculations by the harvesting operator
2. Ensure crop residues on machines are kept to an absolute minimum, especially in areas of potentially high fire risk, such as engines, exhausts or brakes.
3. Adopt a regular maintenance program, both before and during grain harvest operations, paying particular attention to wearing parts and bearings.
4. Operators being aware of the construction materials on harvesting machines and taking reasonable steps to reduce any potential build-up of static electricity through harvesting operations.
5. At all times ensure there is immediate access to a UHF CB radio and/or a fully charged mobile phone that has full service coverage. If relying upon a UHF CB radio there must be a responsible adult at the other end who can call “000”.

Recommended Practices

1. As conditions deteriorate, increased maintenance and vigilance should be practiced.
2. As conditions deteriorate, actively seek information on voluntary harvesting bans.
3. Prior to harvesting commencing, establish a minimum 4-metre fuel break around the perimeters of crops or paddocks to be harvested. This may consist of a 4 metre mown or chemical break with a 2 metre ploughed strip incorporated within it. Alternatively, review your property lay-out and establish a series of strategic fire breaks around groupings of paddocks.
4. Maintain maintenance records.
5. Have a well-maintained and fully operational farm fire-fighting unit with a minimum of 250 litres of water located in the paddock area where harvesting or grain handling operations are occurring. Refer to the Joint Guidelines for operating Farm Fire Units (found at www.cfs.sa.gov.au).
6. Operators should monitor media fire ban information advice, or consult the Bureau of Meteorology through their various information methods.
7. All operators of harvesting equipment should be bushfire ready by having appropriate firefighting clothing and a plan for the protection of themselves, their equipment and the community.
8. Inexperienced operators should undergo instruction and training.
9. Establish a fire prevention and emergency response strategy in regards to fire safety for staff, contractors and machinery operators.

RESILIENCE PROJECTS

AUBURN COMMUNITY

HEATWAVE CHECKLIST




Government of South Australia





Before a heatwave

- ☐ Plan ahead to avoid going out during the hotter part of the day
- ☐ Prepare a cool room in your home using air conditioning, fans, curtains or blinds
- ☐ Find a cool place in your area where you can go: a shopping centre or public library
- ☐ Know the signs of heat-related illnesses such as dehydration
- ☐ Have enough food, drinks and medication for family and pets
- ☐ Keep up to date with heatwave warnings on the radio, television and social media
- ☐ Plan how you will keep your pets cool and healthy

Keep cool

- ☐ Close windows, blinds and curtains in the morning
- ☐ Use your air conditioner on the cool setting
- ☐ Do any outdoor activities when it is cooler
- ☐ Wear loose light-coloured clothing, a hat with a brim, sunnies and sunscreen when outside
- ☐ Have cool showers or use a small wet towel, cool packs or a spray bottle
- ☐ Sleep in the coolest room in the house
- ☐ Have plenty of bowls of water, cool spots and shade for your pets

Stay hydrated

- ☐ Drink plenty of water. Carry water with you.
- ☐ Have less coffee, tea, alcohol, soft or energy drinks

Check

- ☐ Small children, older people and people with certain health conditions are drinking enough water
- ☐ Family, neighbours and friends are using their air conditioning or fans to keep cool

Heatwave Warning Levels



Advice



Watch & Act



Emergency Warning

For more information scan the QR code, visit ses.sa.gov.au/heatwave



Life threatening emergency call

000

Emergency assistance call

132 500

For more information call

1800 362 361

December, 2022



AUBURN **INSTITUTE &** **FUNCTION CENTRE**

This historic and iconic building has been recently renovated to its original grandeur and is available for hire. A small seminar to a conference, a wedding, or any other suitable event. The main hall has a fully equipped stage with attached dressing room for cabaret or live shows with seating for 110.



Available for HIRE

**Multi-Purpose
Venue**

**Fully Equipped
Commercial
Kitchen**

**Small Groups of 10
for a seminar up to
110 for a
conference or
Cabaret style
function and
everything in
between**

AUBURN INSTITUTE

**30 Main North Rd
AUBURN SA 5451
1300 907 284**

**www.institute.auburn.sa.au
institute@auburn.sa.au**

**Call any time for details or
send an email**